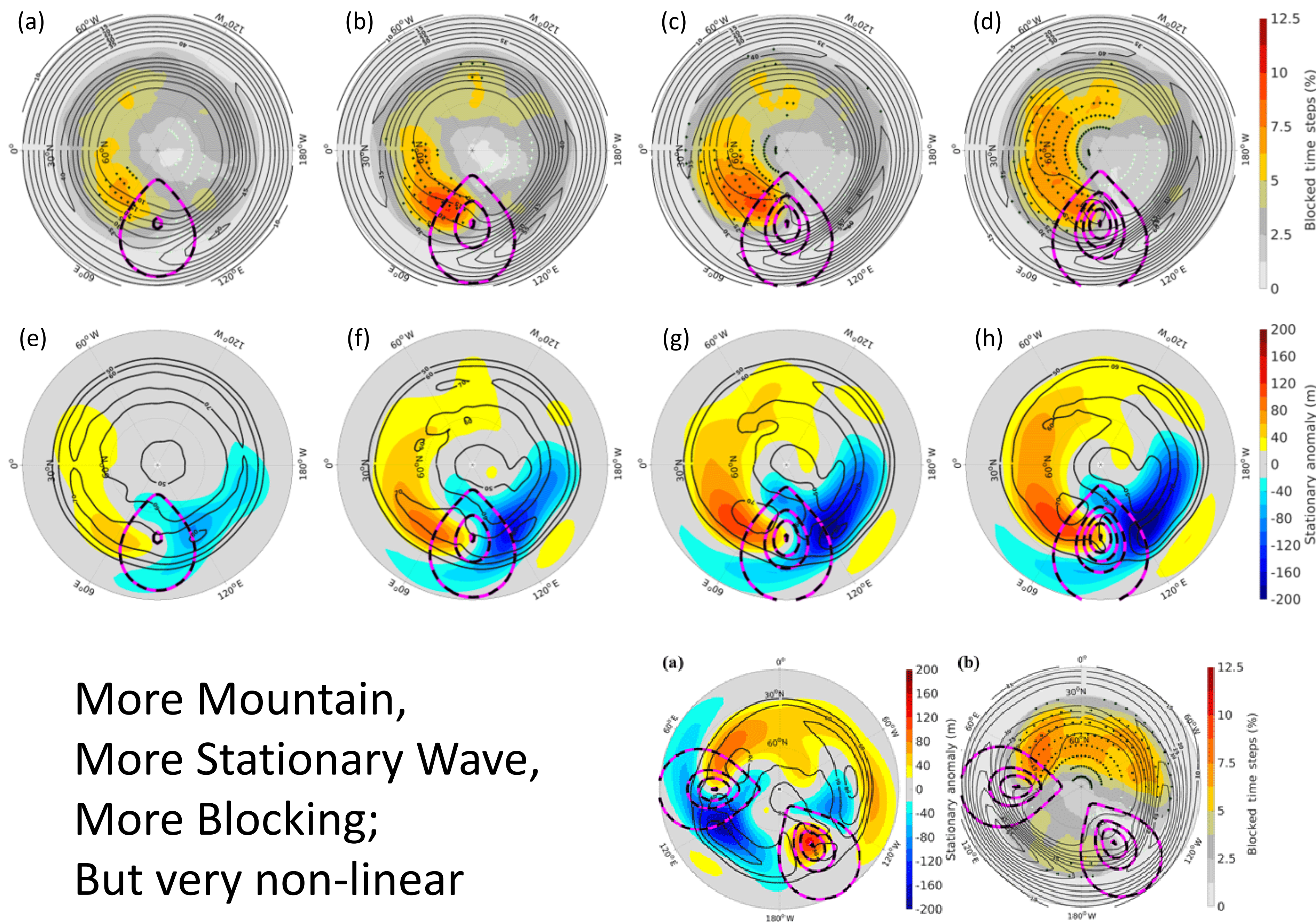
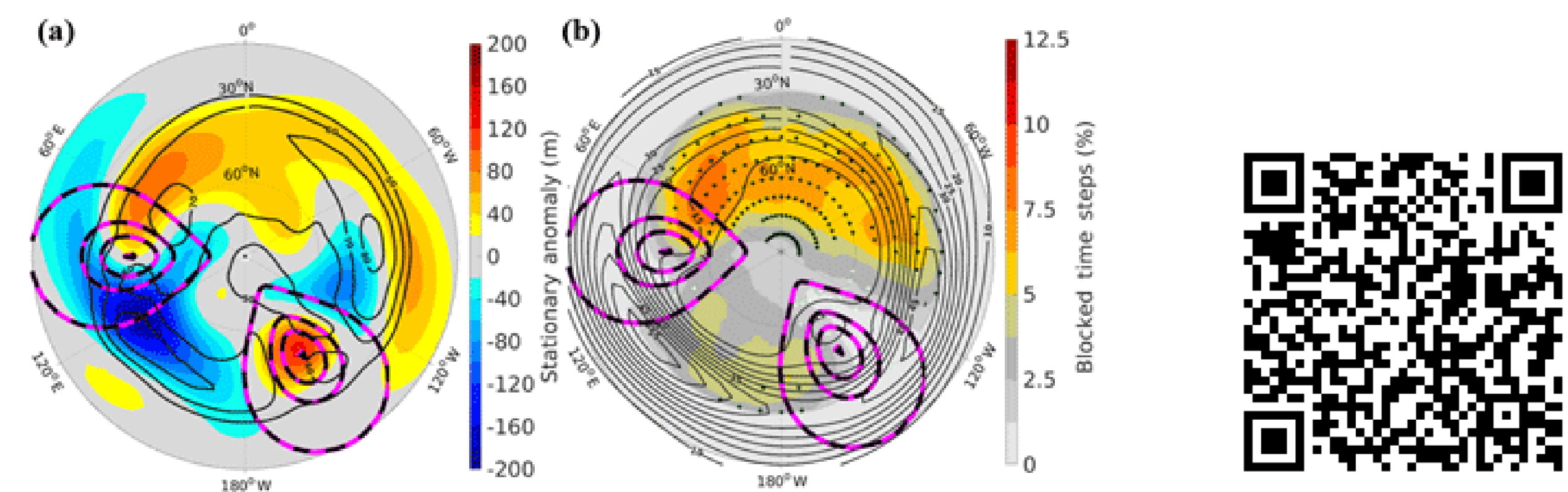




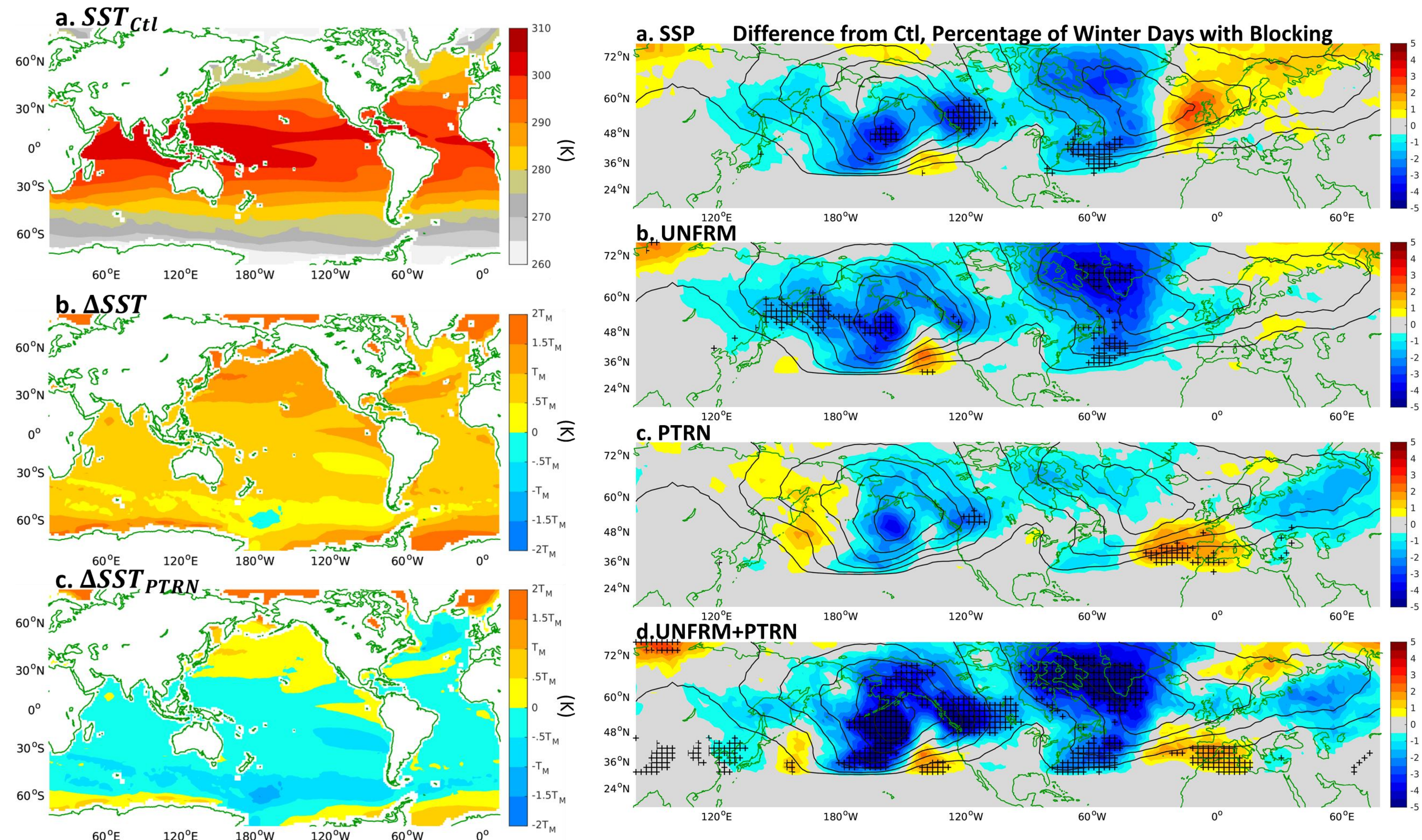
Atmospheric Blocking in an Aquaplanet and the Influence of Orography



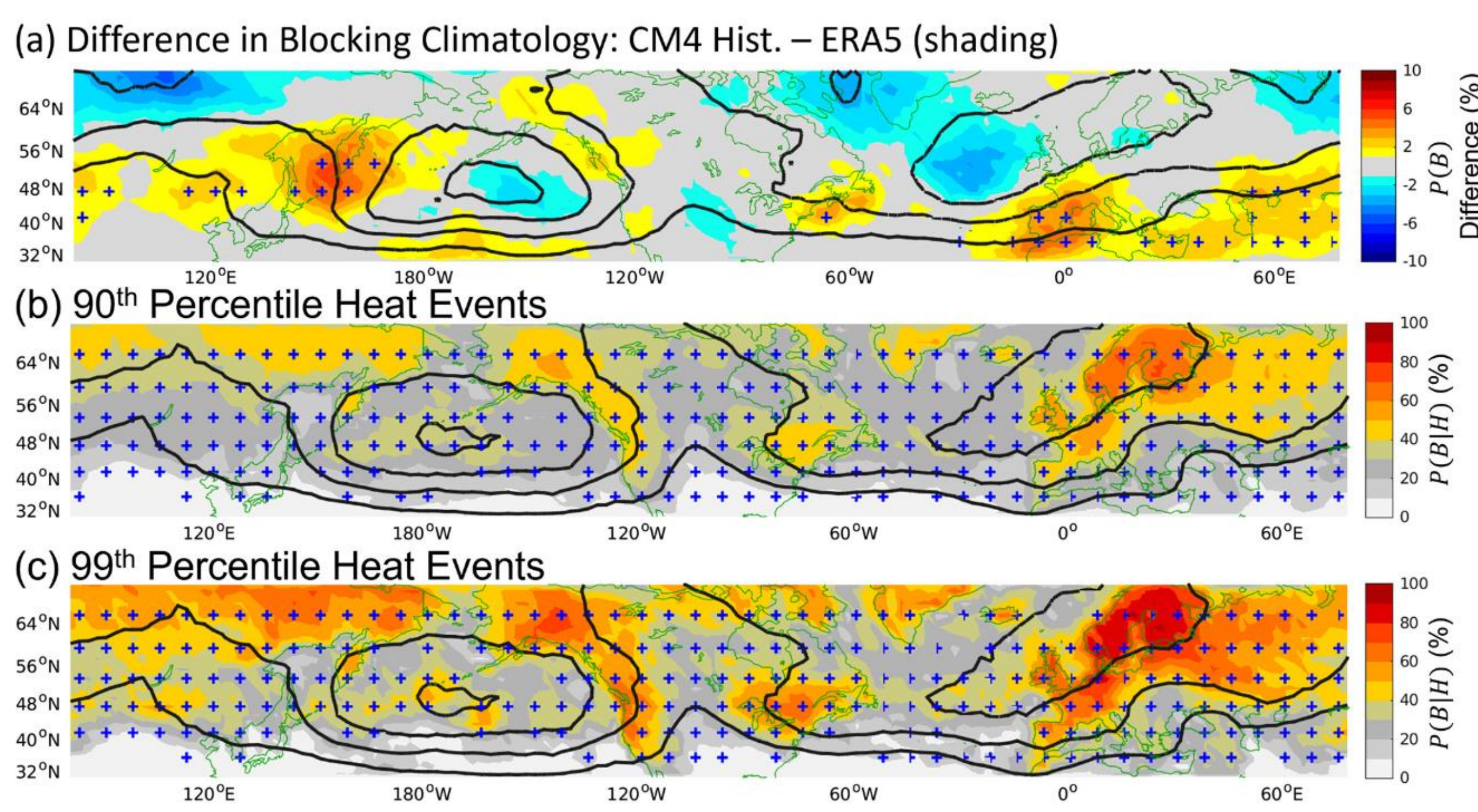
More Mountain,
More Stationary Wave,
More Blocking;
But very non-linear



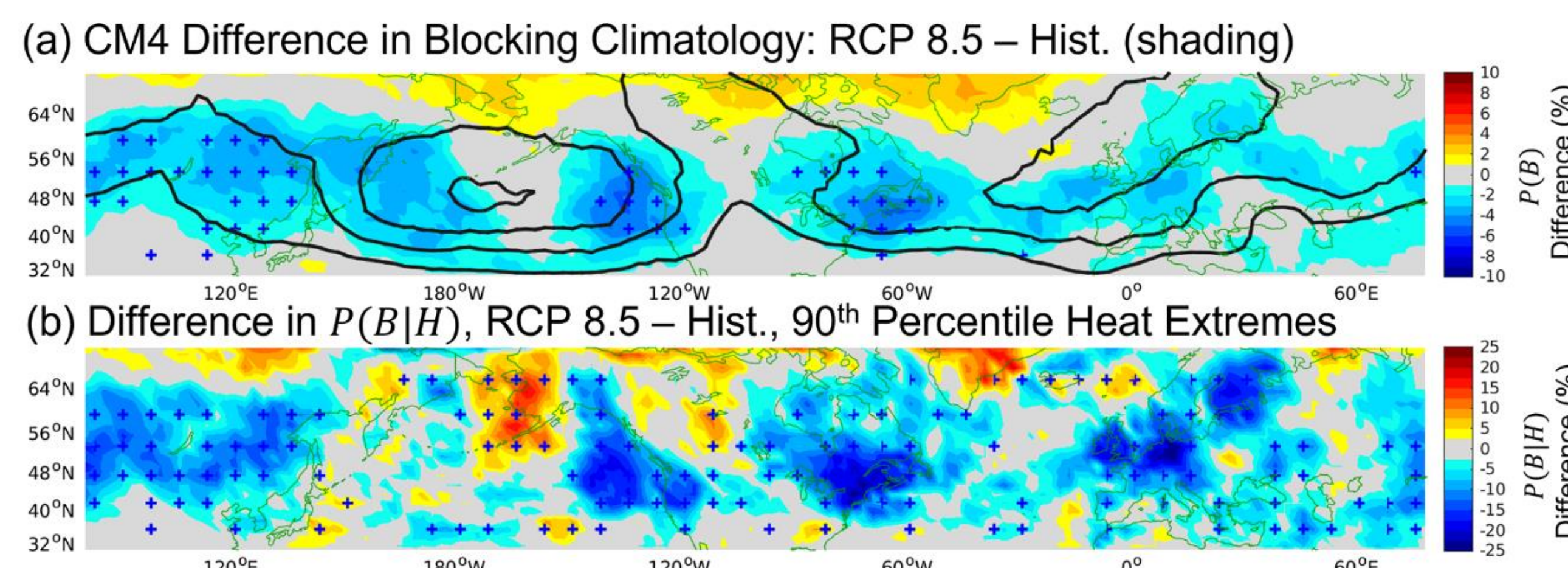
How does blocking change in future climates and why?



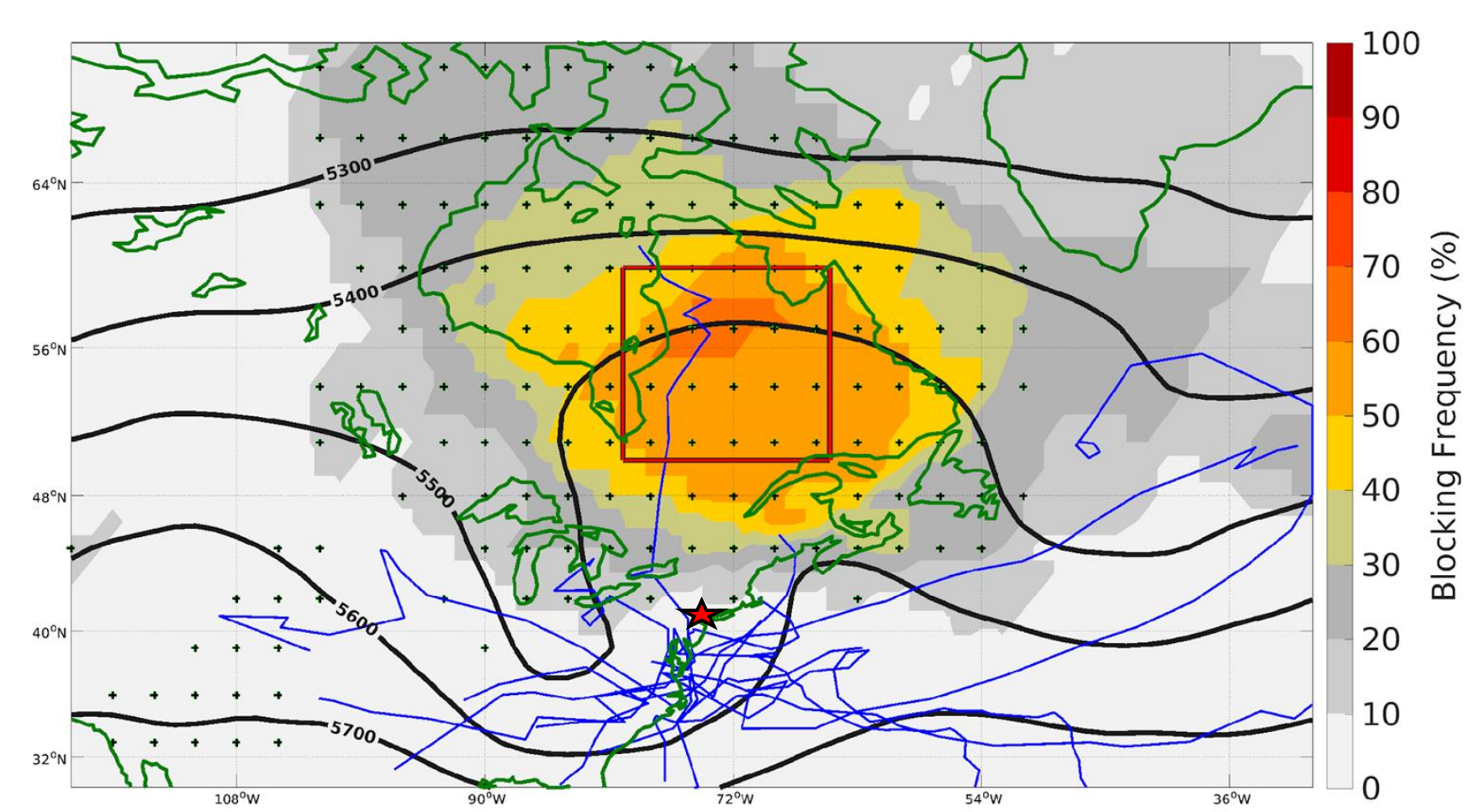
Blocking and Extreme Weather Events



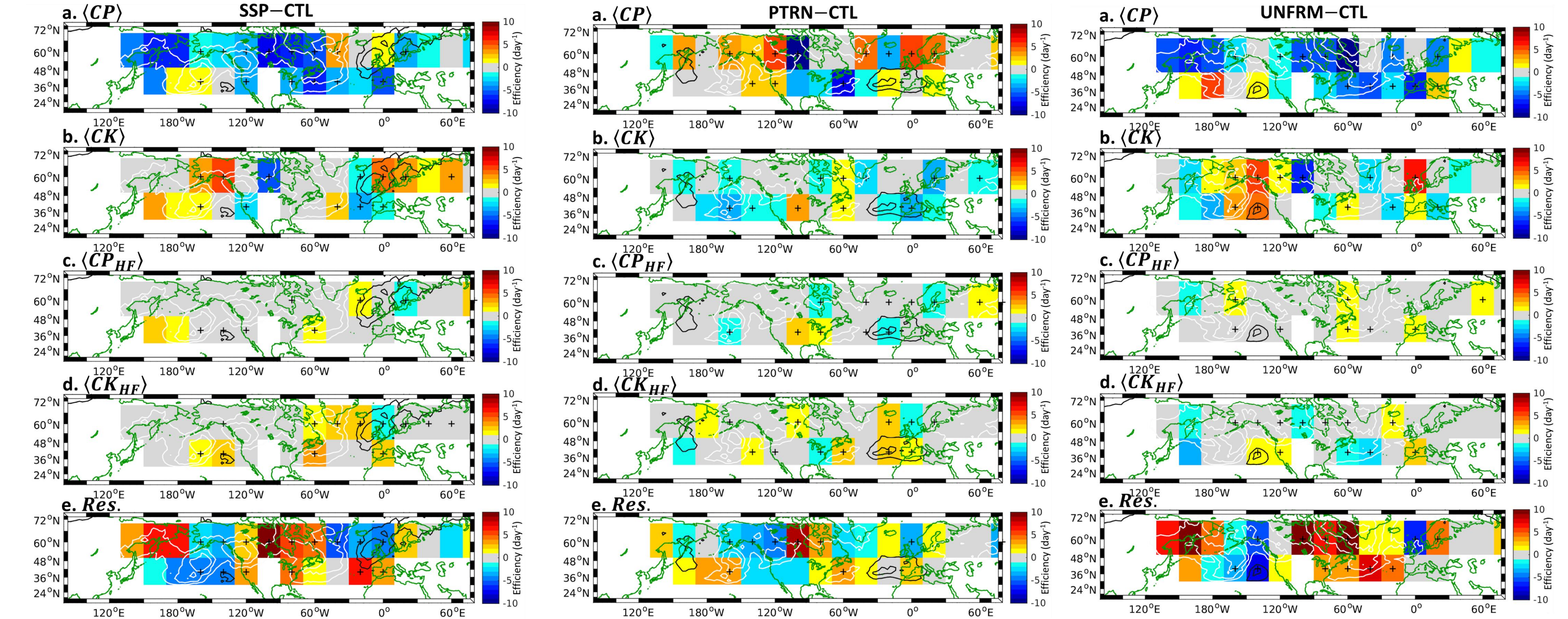
Heatwaves
less driven by
blocks in a
warmer world



Strong Regional Variation in the Colocation
of Blocking and Heat waves



Blocking can
drive
persistent
storm surge



Uniform warming of SST drives most of the
general circulation and blocking response

Reductions in blocking seem to be driven
by decreased baroclinic conversion

