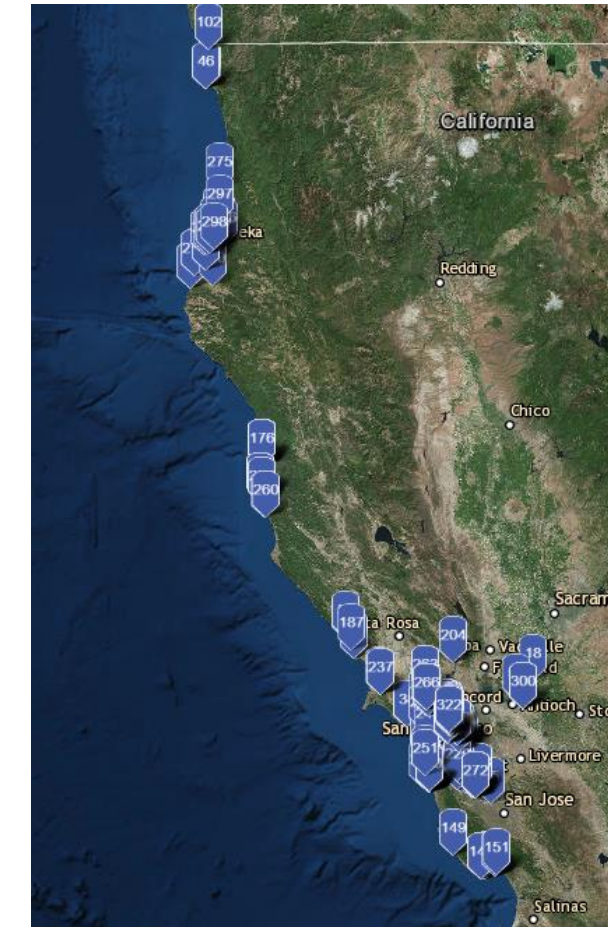


## King Tide Events - Crowd-sourced Data For Sea Level Rise

Serve as tremendous community engagement tools for coastal communities.

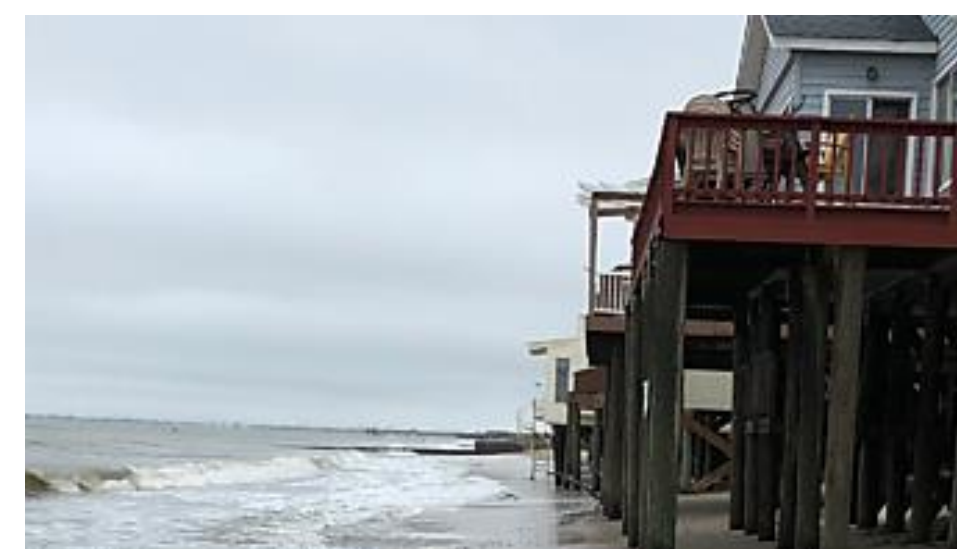
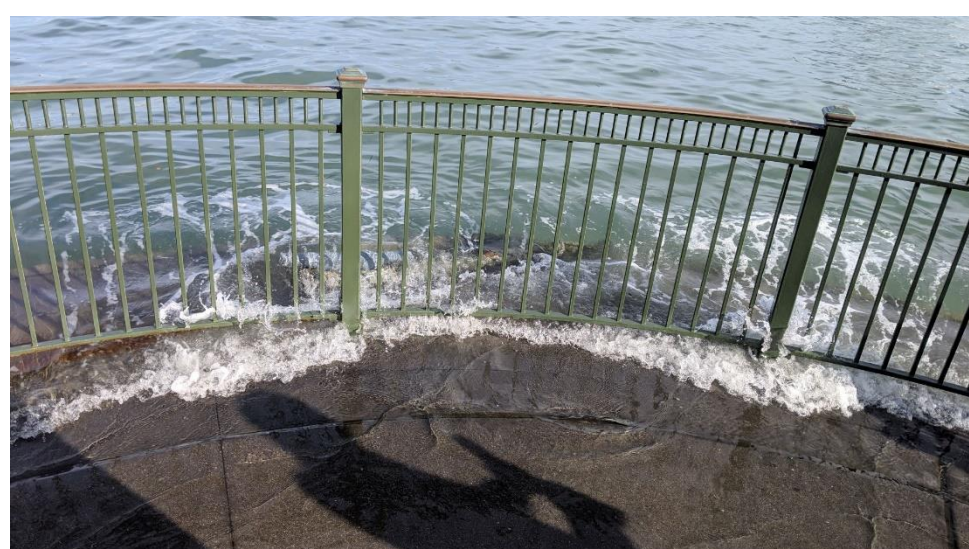
Provide easy-to-grasp real world "visualizations" of the impact of future sea levels.

Deliver a call-to-action and a needed opening for ongoing community education and action.



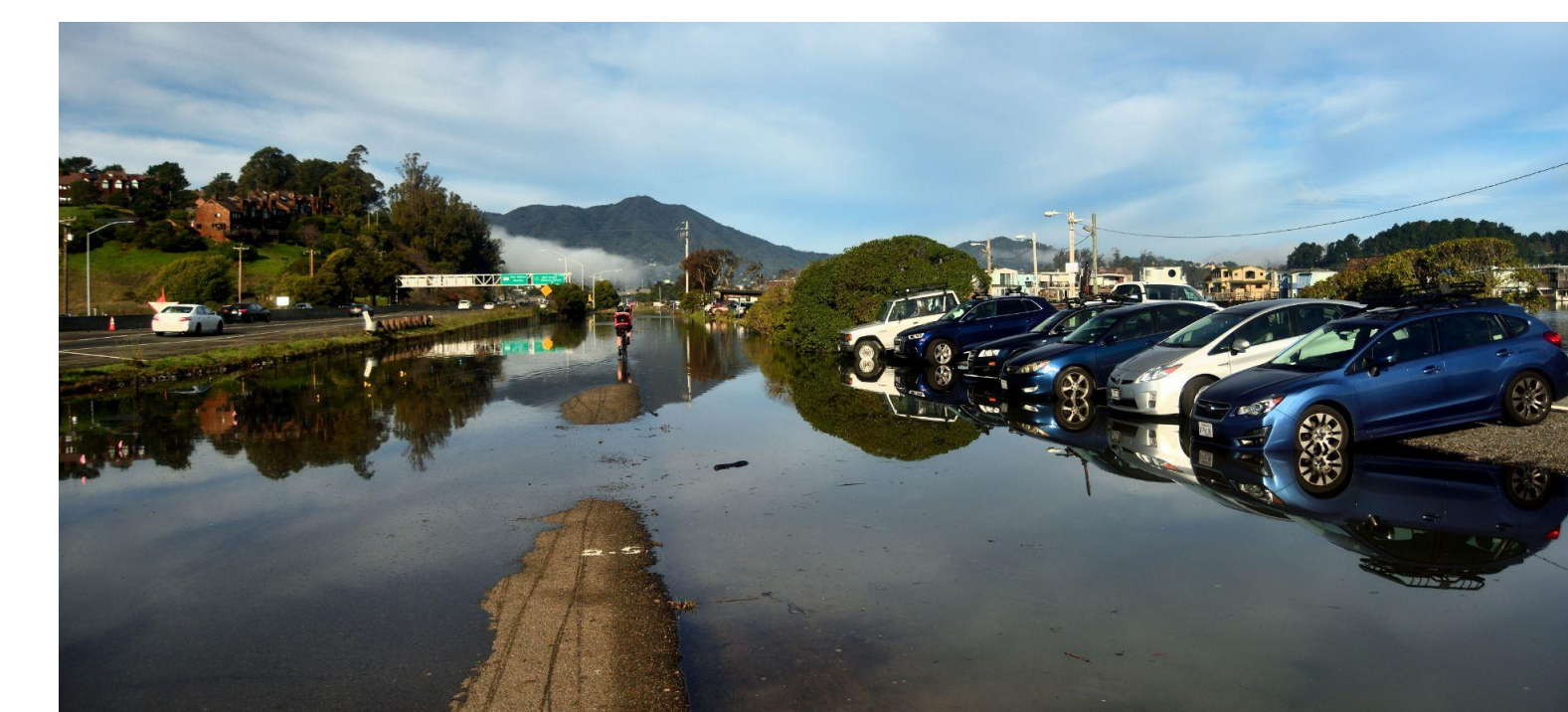
Volunteers simultaneously record the high-water mark and document conditions and impacts.

Data is aggregated and provided to researchers to validate inundation computer models.

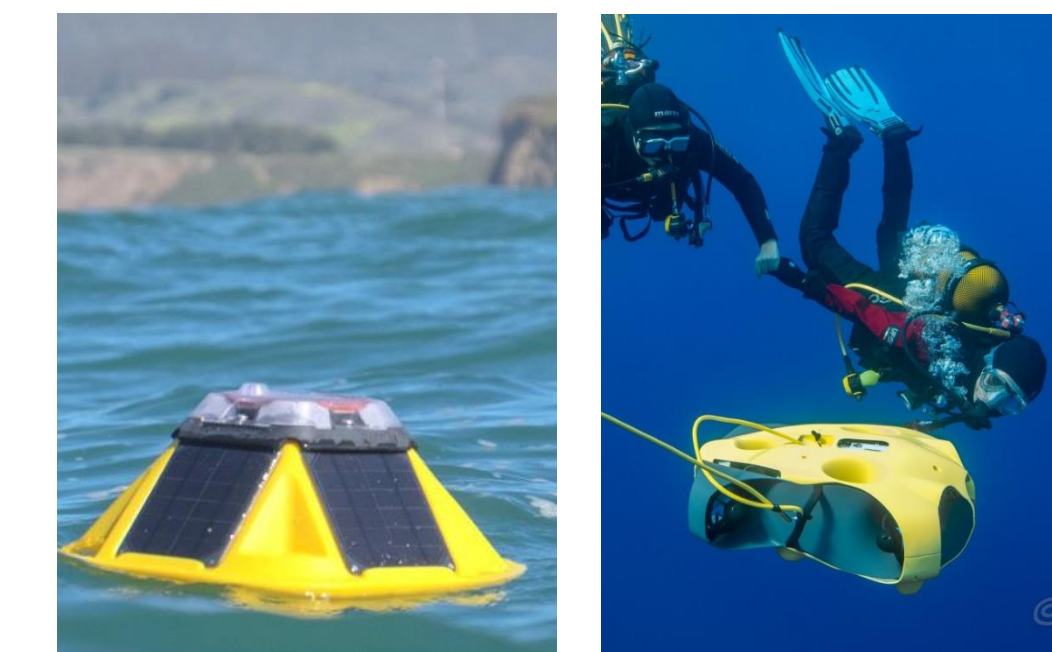


Photographs demonstrate real world impacts on citizens, homes, businesses, and communities.

Tailored school curriculum incorporates real-world data for STEM and other classes.

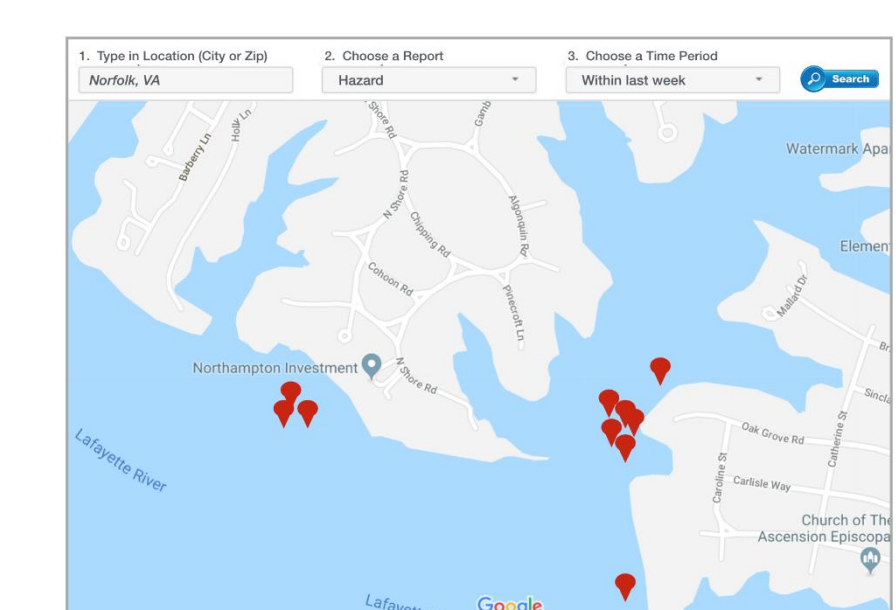
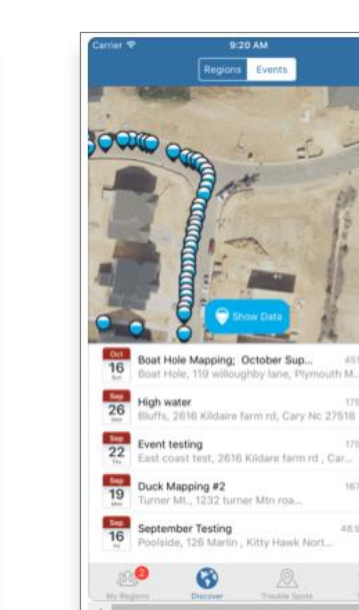
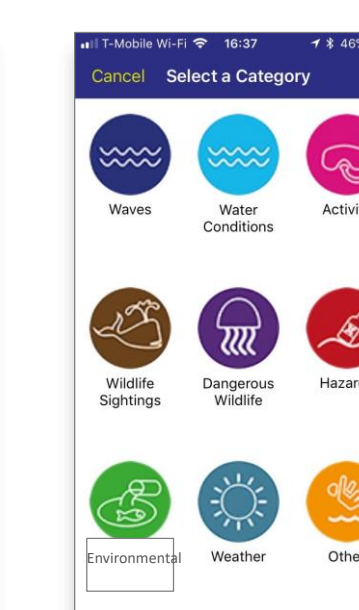
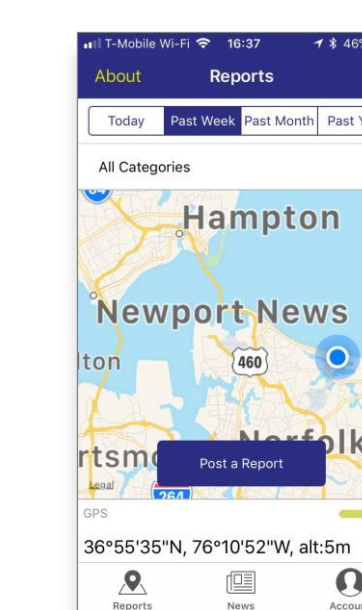
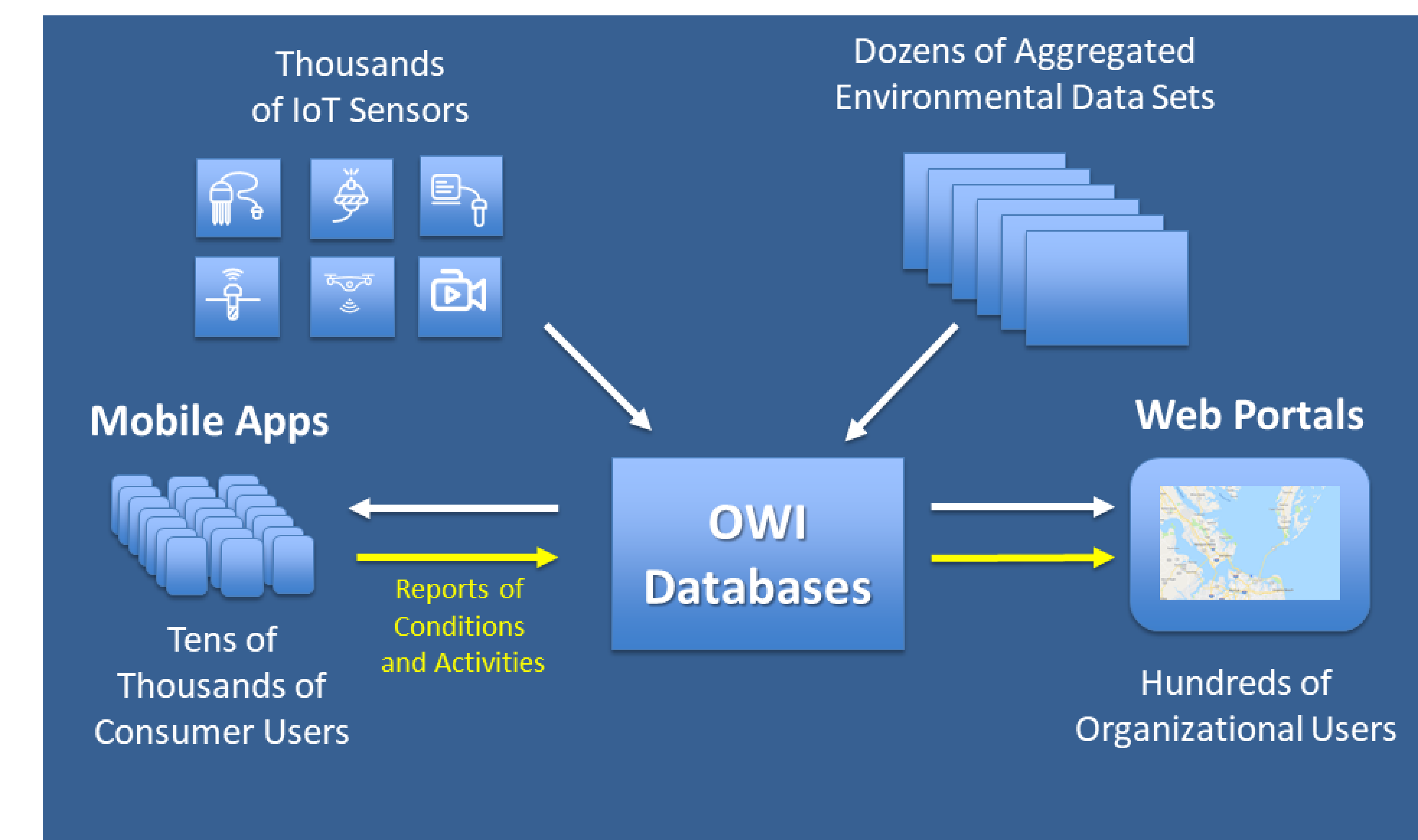


## Open Water Innovations - Platform as a Service

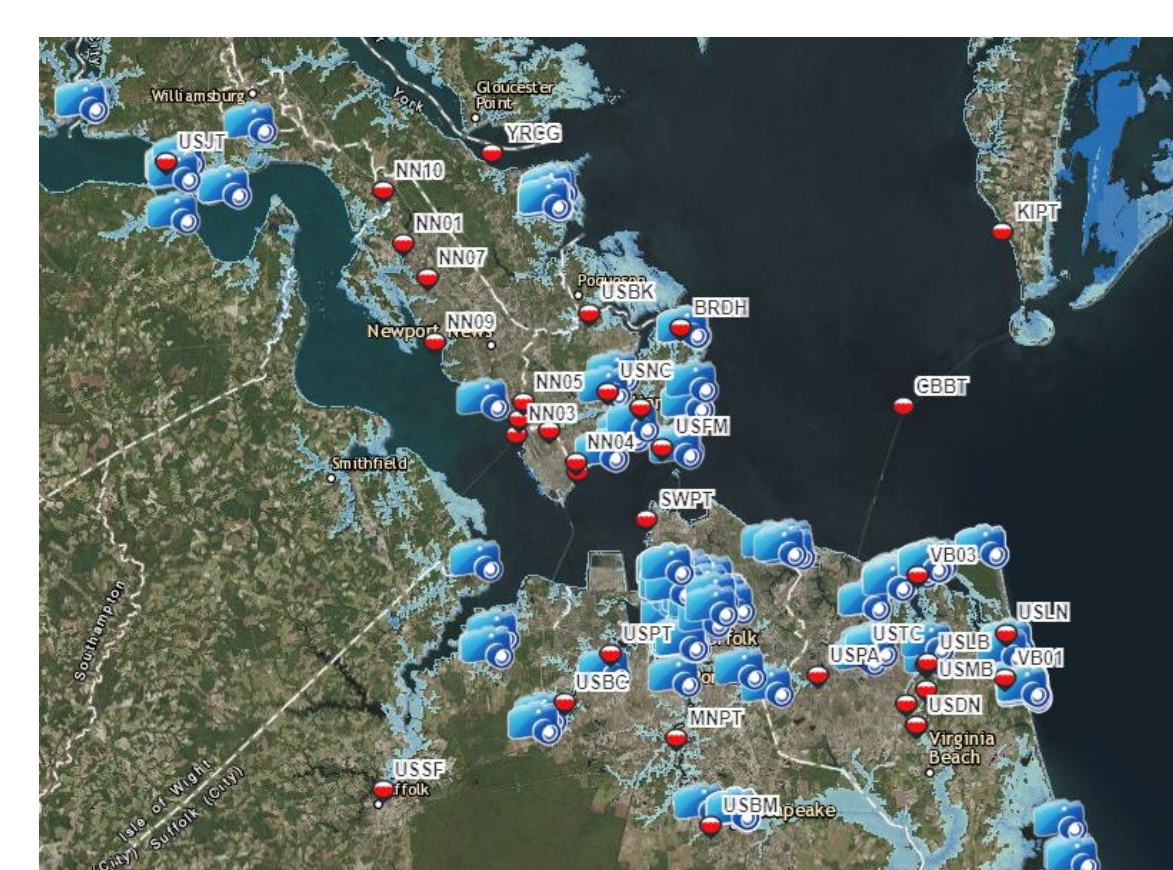


Station 44014 (LLNR 660) - VIRGINIA BEACH 64 NM East of Virginia Beach, VA

Funding provided by the US Army Corps of Engineers, Coastal and Hydraulics Laboratory  
Owned and maintained by National Data Buoy Center  
3 meter discus buoy  
AIRCIS buoy  
36.006 N 74.840 W (36°36'23" N 74°50'23" W)  
Site elevation: sea level  
Air temp height: 4 m above site elevation  
Aerometer height: 5 m above site elevation  
Barometer elevation: sea level  
Sea temp depth: 0.5 m below water line  
Water depth: 47 m  
Watch circle radius: 101 yards



## Components



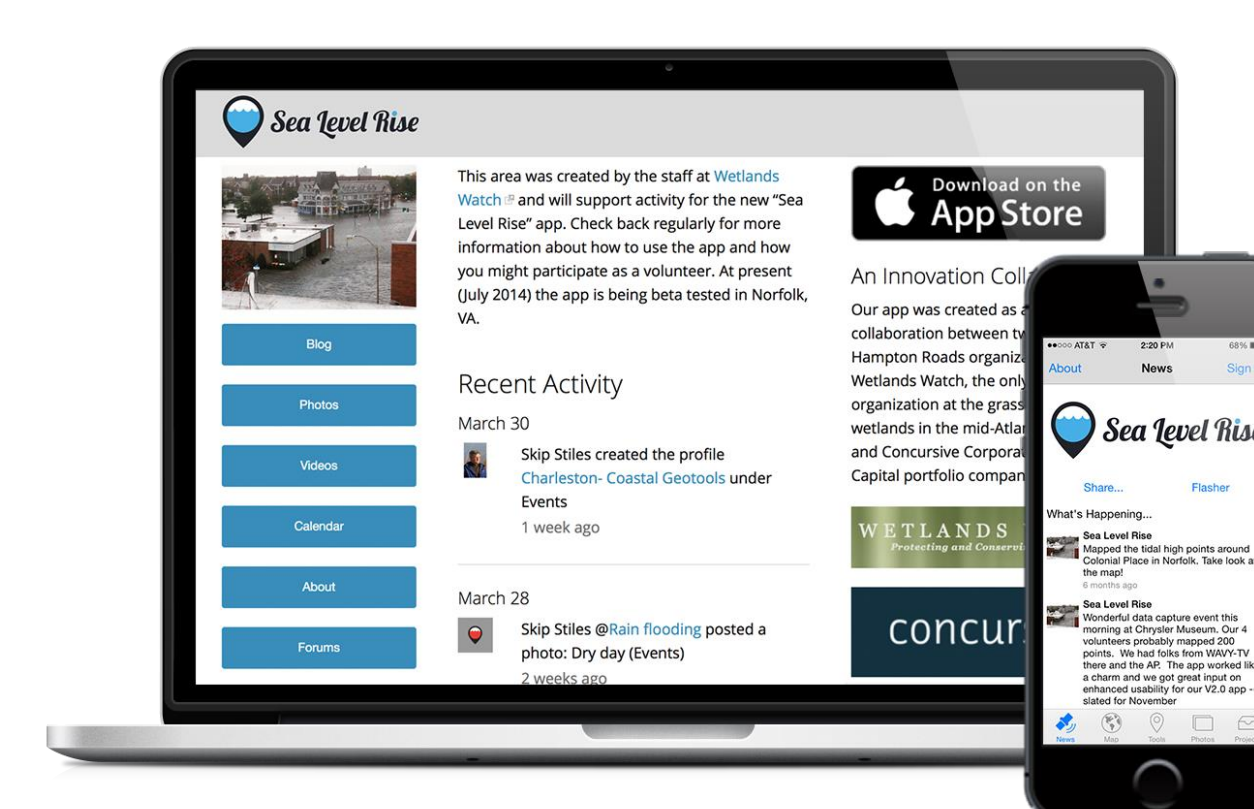
Mobile app for users to record data

Back end to store data

Web portal interface

Data export capabilities

Educational Outreach and Curricula



## Fielding Plan and Contact Information

Sea level Rise Mobile App and Sea Rising Solutions Web Portal Version 2.0 available now  
**Version 3.0 to be released early Fall 2019**



CoastWize Mobile App and Web Portal in Beta  
**Version 1.0 to be released by 01 June 2019**



POC: Steve Woll, [steve@coastwize.com](mailto:steve@coastwize.com), 757-270-8819