

Temperature observations in Ilulissat Icefjord 2009-2011 and modeled fjord renewal

Carl Gladish (NYUAD)

David Holland (NYU)



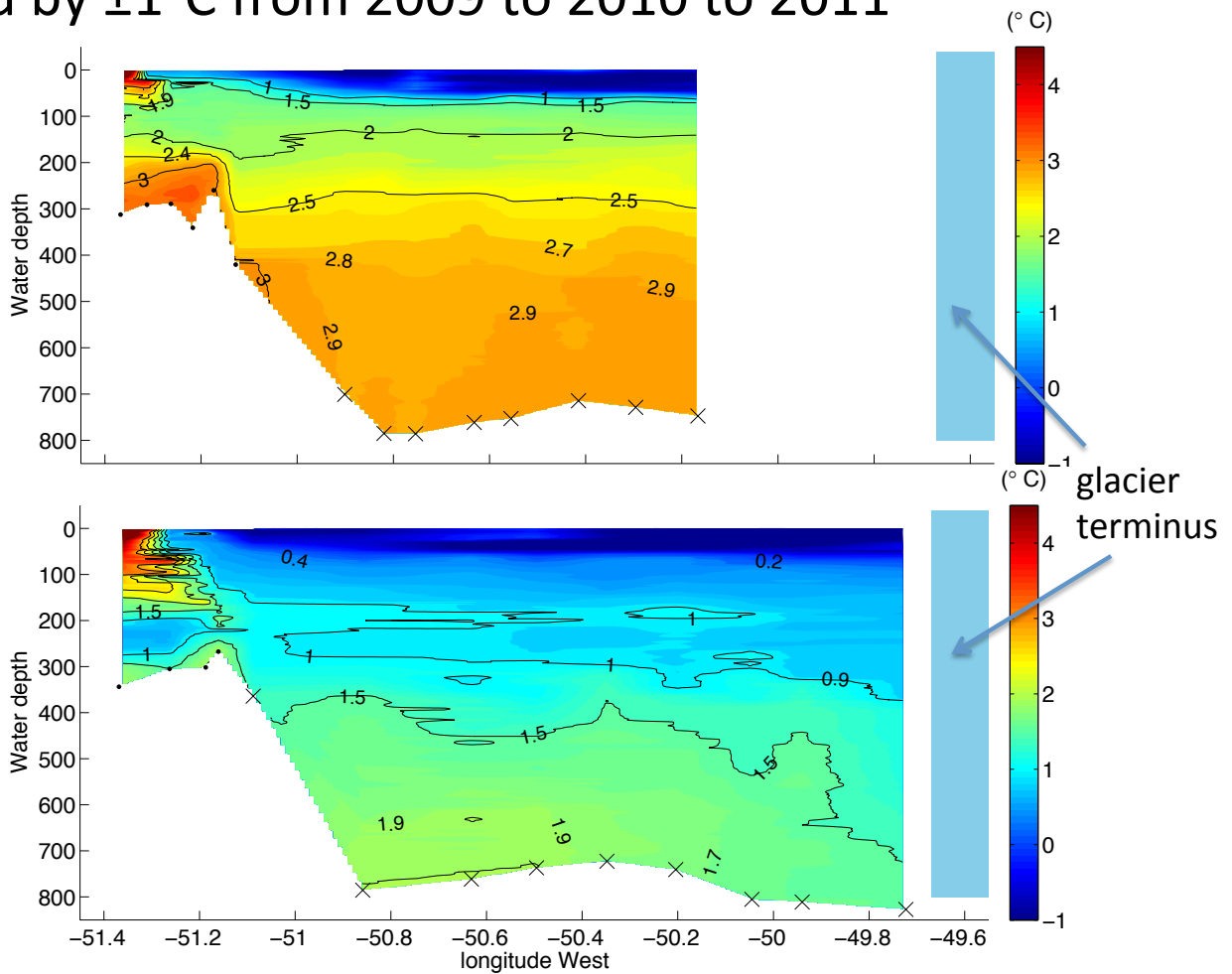
NEW YORK
UNIVERSITY



ABU DHABI

Ilulissat Icefjord water is warm at depth,
rather homogeneous below sill depth (250 m),
and varied by $\pm 1^\circ\text{C}$ from 2009 to 2010 to 2011

Summer 2009
temp $\sim 3^\circ\text{C}$



Model experiments with MITgcm show sub-glacial discharge of a few $\text{km}^3 \text{yr}^{-1}$ could drive the observed annual renewal.

