



**SSAG**



# Constraints on the Holocene extents of the southwestern margin of the Greenland Ice Sheet, Kangerlussuaq, Greenland

Laura Levy<sup>1</sup>, Meredith Kelly<sup>1</sup>, Patrick Applegate<sup>2</sup>, Claire Arthur<sup>1</sup>, Ross Virginia<sup>1</sup>, Jennifer Howley<sup>1</sup>

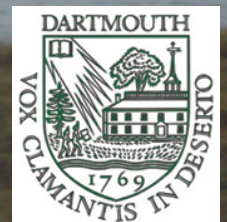
<sup>1</sup>Dartmouth College, Hanover, NH

<sup>2</sup>Pennsylvania State University, PA

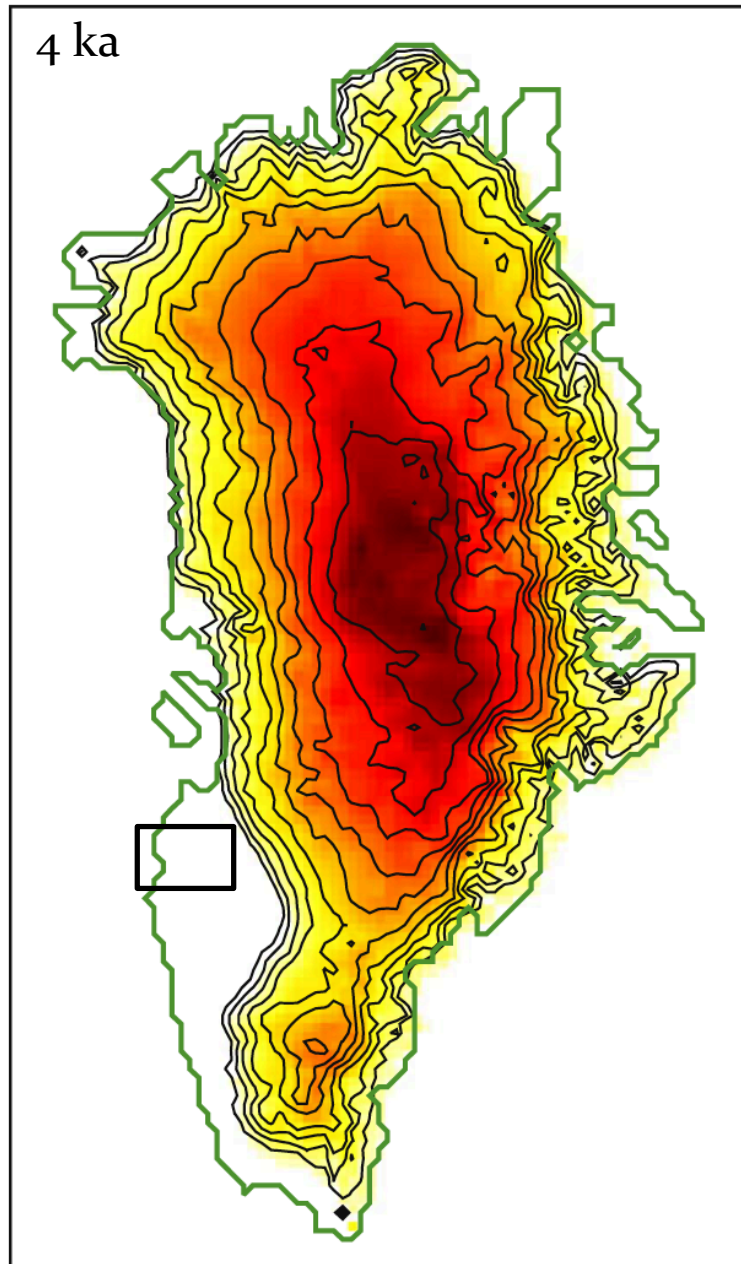
U.S. CLIVAR

Greenland Ice Sheet Ocean Interactions Workshop

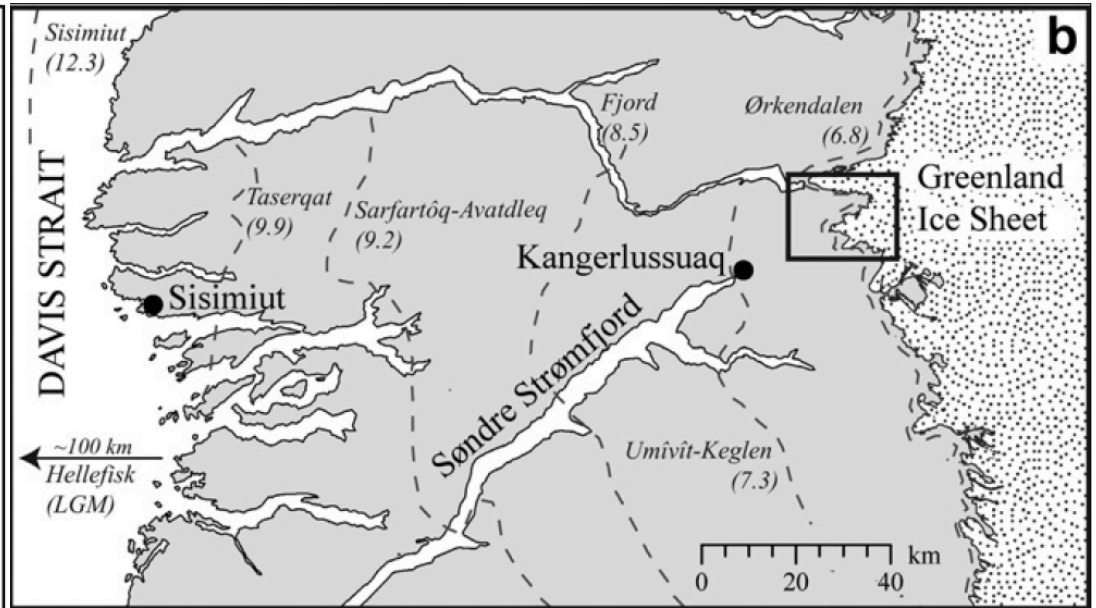
June 4th, 2013



# Study Site: Kangerlussuaq, Greenland

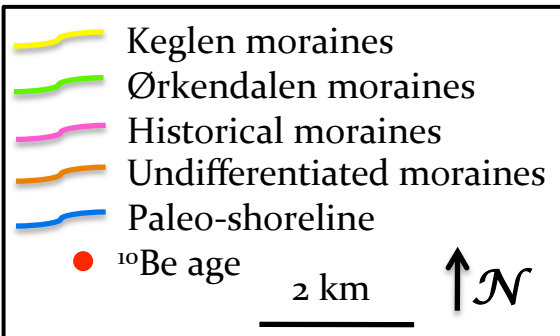


Simpson et al., 2009

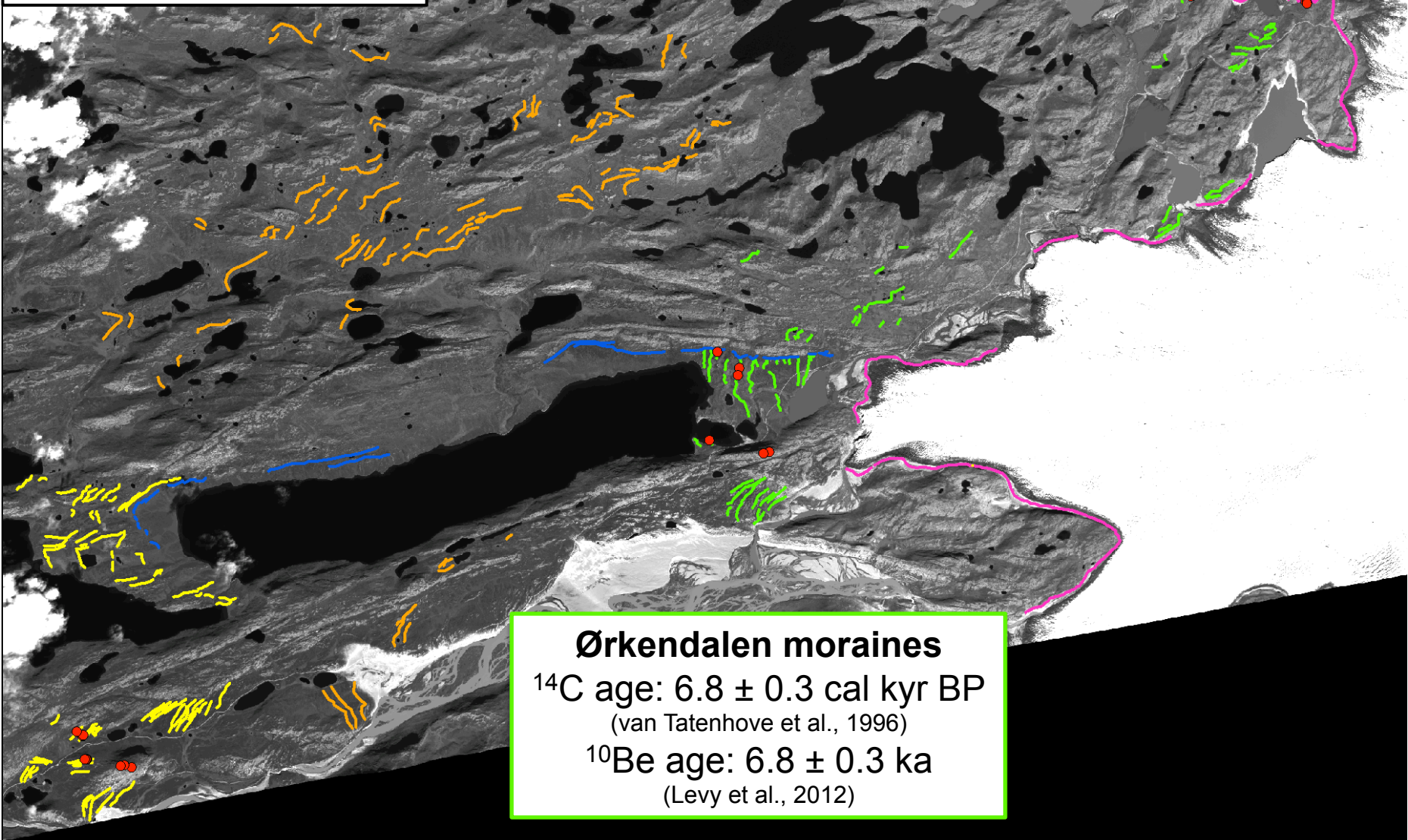


Levy et al., 2012 (QSR)





**Historical moraines**  
 AD 1880  
 (Weidick, 1968)  
 $^{10}\text{Be}$  age: AD 1830-1950  
 (This study)



**Ørkendalen moraines**  
 $^{14}\text{C}$  age:  $6.8 \pm 0.3$  cal kyr BP  
 (van Tatenhove et al., 1996)  
 $^{10}\text{Be}$  age:  $6.8 \pm 0.3$  ka  
 (Levy et al., 2012)