



www.natur.gl

Circulation and heat sources for glacial melt in a subarctic sill fjord (Godthåbsfjord)

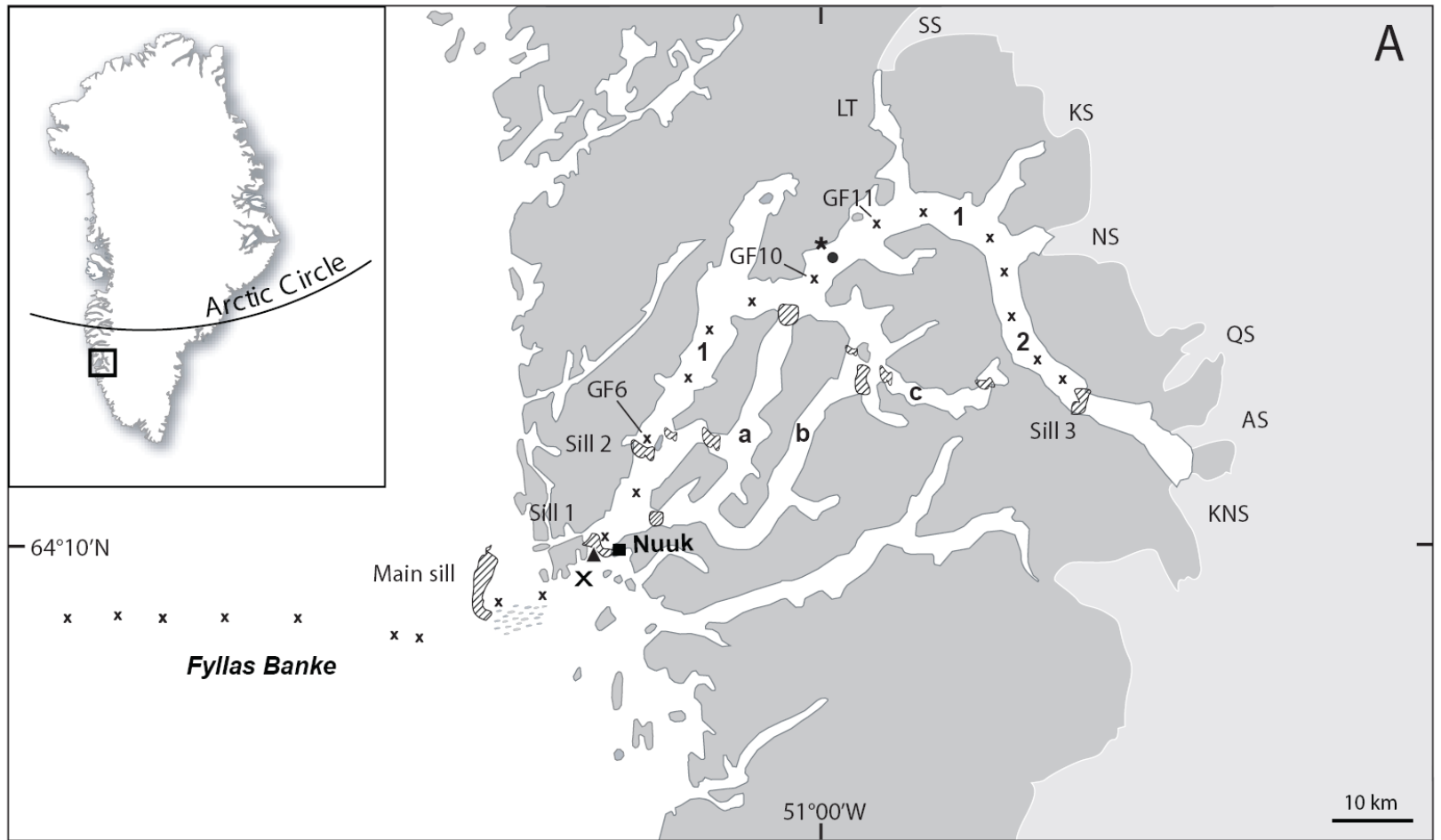


*John Mortensen – Greenland Climate Research Centre (GCRC)
Greenland Institute of Natural Resources*



www.natur.gl

Activities in Godthåbsfjord

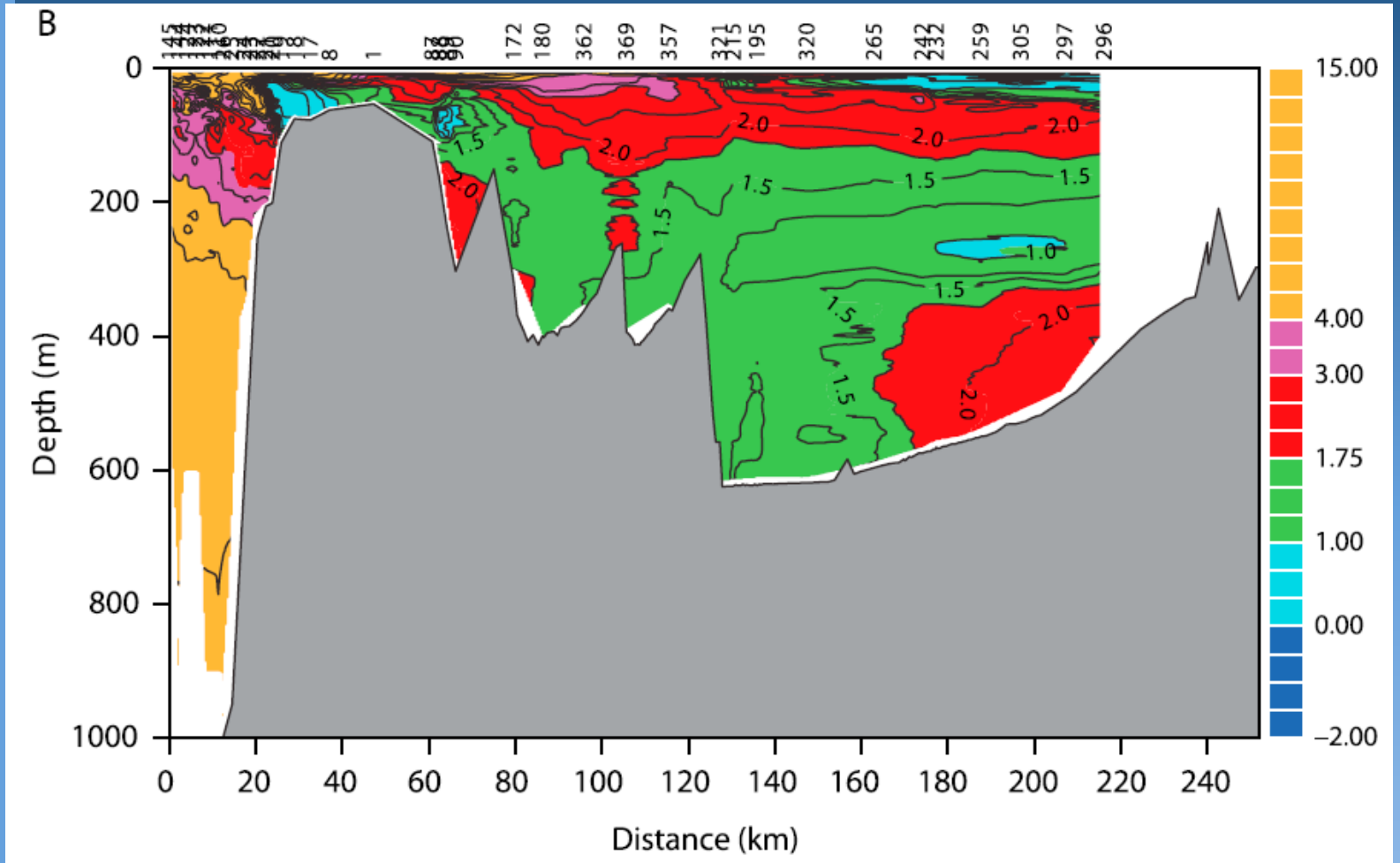


Mortensen et al. 2011



www.natur.gl

Local heat source: unique?



Mortensen et al. 2011