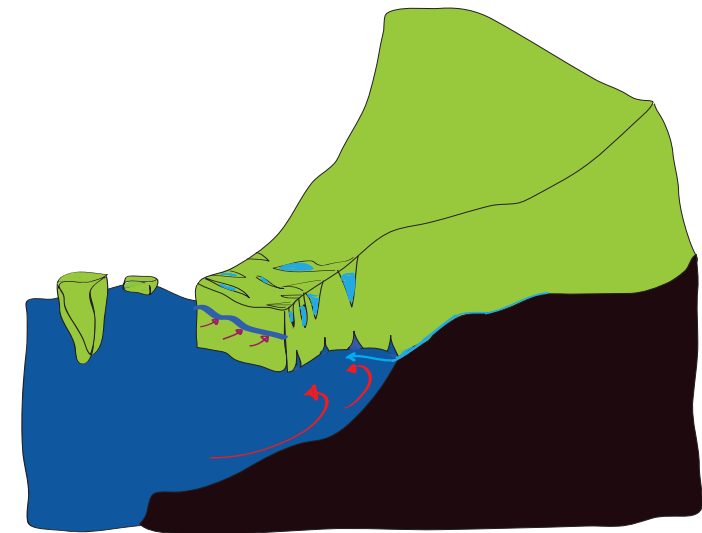
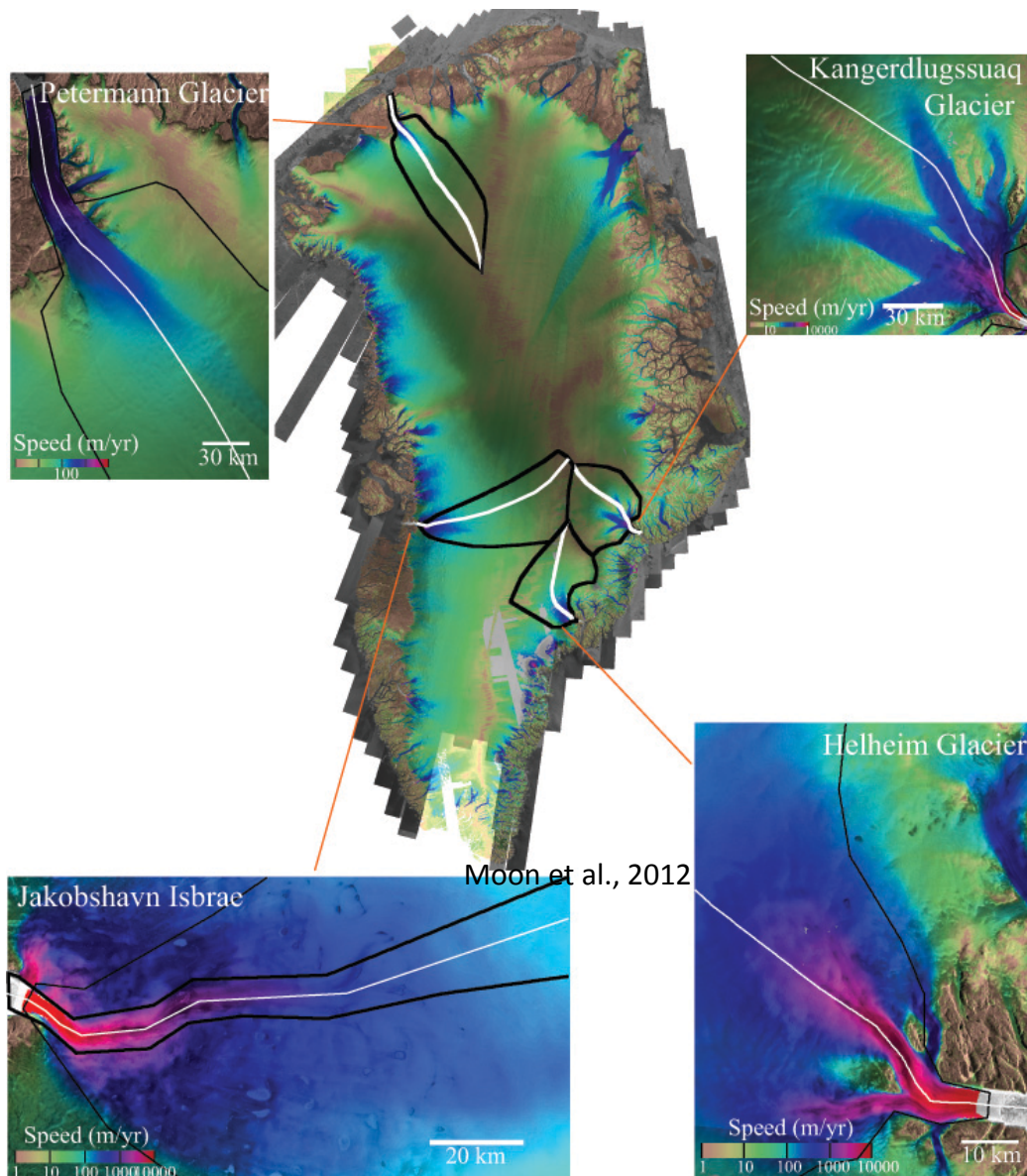


Future sea-level rise from Greenland's major outlet glaciers in a warming climate

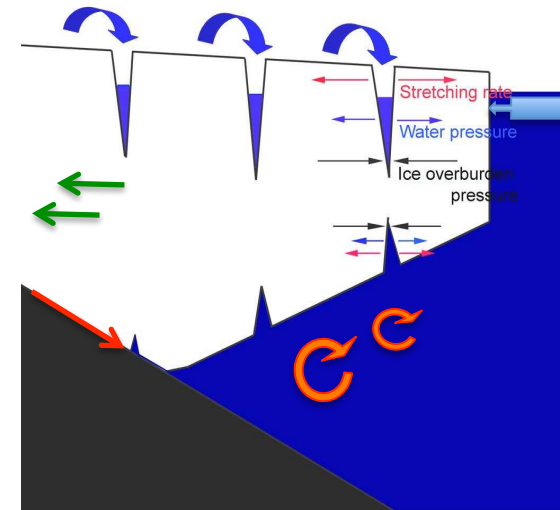
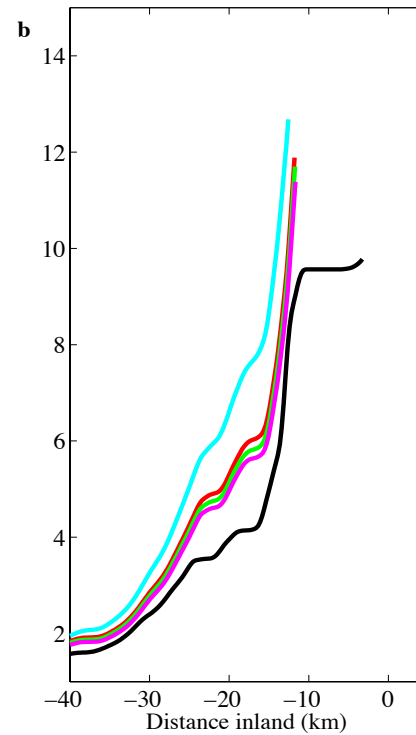
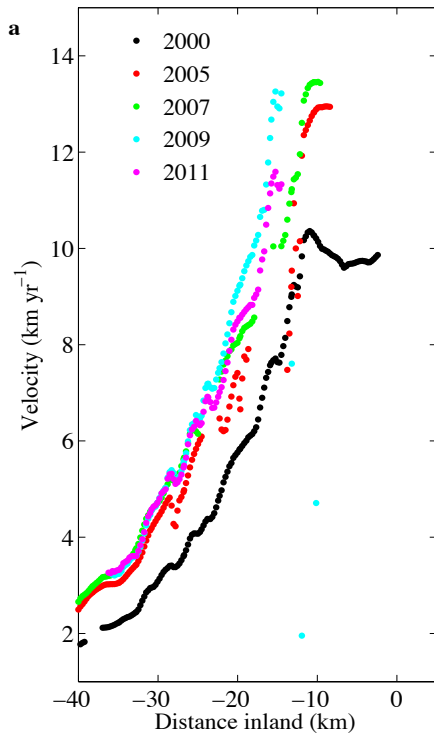
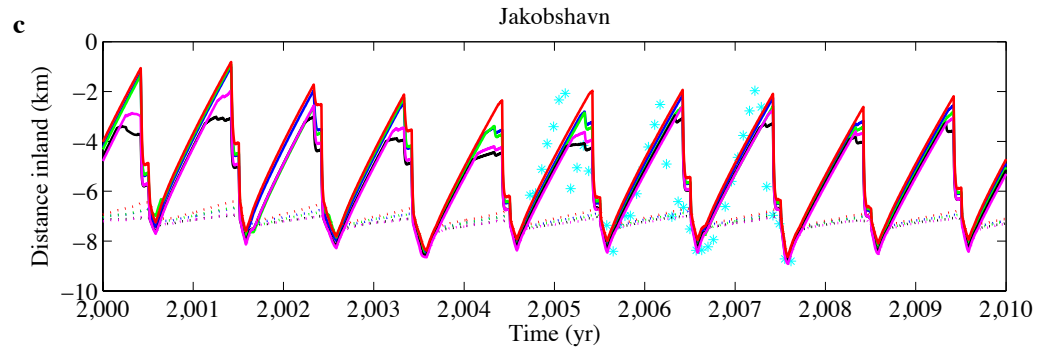
Faezeh M. Nick, Andreas Vieli, Morten Langer Andersen, Ian Joughin, Antony Payne, Tamsin L. Edwards, Frank Pattyn and Roderik S. W. van de Wal



Processes at or near the grounding line:

- Submarine melt
- Hydro fracturing of surface crevasses
- Reduction in ice mélange
- Basal lubrication
- Lateral resistance

Calibration and validation



- Submarine melt** (T_{ocean} & Runoff)
- Surface crevasses** (Runoff)
- Ice mélange** (T_{fjord})
- Basal lubrication** (Runoff)
- Lateral resistance** (T_{air})

